

# MANISCOPIC


**MLT 627**  
TURBO 24"


- Maximum lifting height : 5.55 m
- Capacity : 2700 kg
- Maximum forward reach : 3.12 m
- Torque convertor




 **MANITOU**

# MLT 627 24" TURBO


 **Lifting capacity** .....2700 kg  
at 500 mm from forks heels.


 **Lifting height** .....5.55 m  
**Times : unladen/loaded (in s)**  
Lifting .....6,8/7,1  
Lowering .....4.8/4.7  
Boom extension.....4,5/4,6  
Boom retraction.....2,2/2,2  
Time unladen (in s)  
Crowd .....3,5  
Dump .....2.7


 **Tyres**  
17.5 LR 24 XM 27

 **Forks (mm)**  
Length.....1200  
Width.....125  
Carriage rotation.....154°


 **Oil bath multidisc brakes on front/rear axle**

 **Perkins engine**  
Type.....1104C.44 Turbo  
Cylinders .....4 cyl./4400 cm<sup>3</sup>  
Power (ISO/TR 14396).....101 HP/74.5 kw  
Maximum torque.....412 Nm at 1400 tr/mn  
Direct injection  
Water cooling

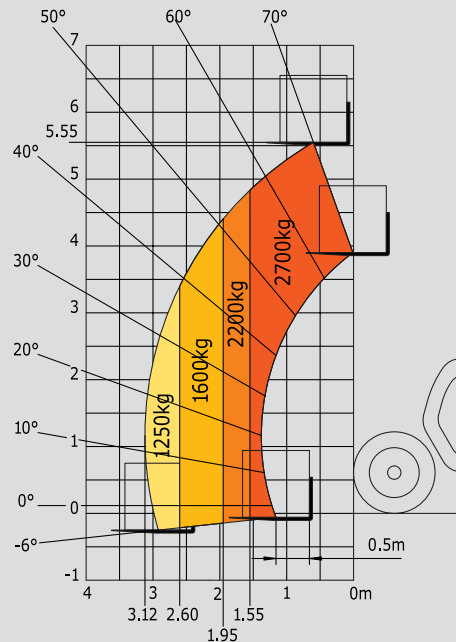
 **Transmission**.....Torque Convertor  
Electro - hydraulic reversing shift  
4 speeds forward and reverse  
Maximum travel speed.....34 km/h

 **Hydraulics**  
Lifting/tilting pump :  
gear type .....105 l./mn - 250 bars  
Flow divider with priority to steering

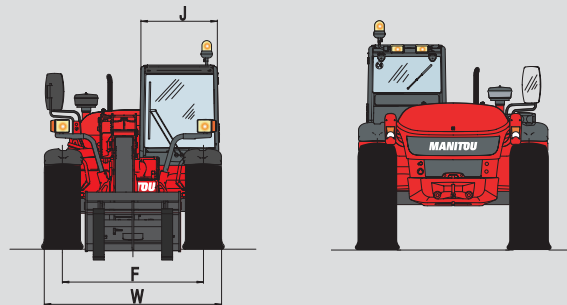
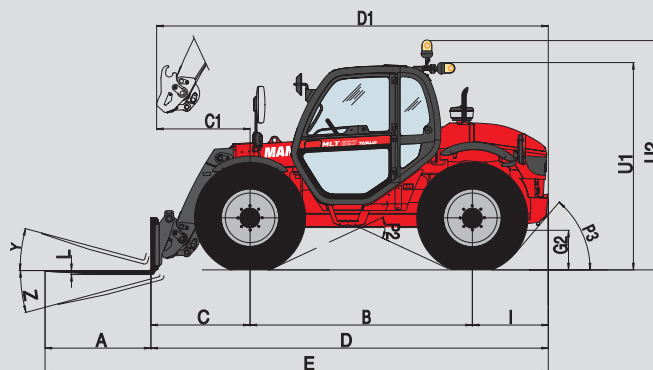
 **Capacities**  
Cooling system.....25 l.  
Engine oil .....8.5 l.  
Hydraulic oil.....98 l.  
Transmission oil .....14.5 l.  
Fuel tank .....104 l.

 **Weight unladen (with forks) :.....5935 kg**  
**Overall width** .....2.17 m  
**Overall height** .....2.30 m  
**Turning radius (outside wheels)** .....3.70 m  
**Overall length** .....4.68 m  
**Ground clearance** .....0.49 m  
**Drawbar pull** : .....7100 daN

## Reach at maximum height : 0,75 m



Under EN 1459 annexe B



	MLT 627 T 24"
A	1200
B	2520
C	1307
C1	1260
D	4687
D1	4640
E	5887
F	1720
G	490
I	860
J	866
K	1260
L	45
O	125
P2	50°
P3	49°
R	3405
S	7507
T	3545
U1	2300
U2	2560
V	4750
V1	1205
V2	3700
W	2175
Y	11,8°
Z	142,3°

mm

This publication in no way constitutes an offer and the company reserves the right to alter specification without prior notice.  
The MANITOU models presented in this brochure can be supplied complete with optional equipment attachments.



**MANITOU BF SA**  
B.P. 249 - 44158 Ancenis Cedex - France  
Tél. : 33 2 40 09 10 11 / Export Department Fax : 33 2 40 09 10 97  
www.manitou.com

700044EN - Doc. BE - 188 Ind. B

