



**KRAMER**  
*on the safe side*

Wheel and tele wheeled loaders of the 5-series  
KL31.5, KL37.5, KL30.5T



## Rooted service providers.

Wheel loaders and tele wheeled loaders of the 5-series.

# KL31.5

## Safe in every respect – Wheel loaders and tele wheeled loaders from Kramer.

All-wheel steering and an undivided chassis for outstanding stability at all times. Intelligent functions and a broad range of attachments for application year-round. A long service life and economic efficiency for even more investment security.

Safety, comfort and a variety of options take priority at Kramer. They show up in every detail of our products. So you can fully rely on Kramer wheel loaders and tele wheeled loaders of the 5-series. And for every application.



### The wheel loaders of the 5-series



KL31.5

Shovel capacity: 0.75 m³



KL37.5

0.95 m³



### The tele wheeled loaders of the 5-series

KL30.5T

0.85 m³

## Your success. Our benchmark.

### Thought-out from the start.

With products from Kramer, you are choosing a machine whose design and development focused on one thing: Hard everyday work. From the start, we make sure that our products meet the requirements of our customers and those of the future alike. Challenging long-term tests with several thousand hours of operation ensure the high quality and readiness for marketing of new machine generations.

### There for you when you need us.

Benefit from our first-class all-round service, whether in the provision of original spare parts or professional diagnostics and maintenance. A comprehensive dealer network with trained service employees is available to you.

### Made in Germany – in demand world-wide.

Kramer-Werke based in Pfullendorf is one of the leading manufacturers world-wide for compact construction and agricultural machines. The highest standards for materials, technology and quality are the guarantee of our powerful and durable products.



Externally sturdy.  
Internally intelligent.



**The hydraulically activated quick-hitch system** makes the Kramer an all-rounder in seconds without leaving the operator's seat. Efficient work with a parallel-guided loading system with P-kinematics for wheel loaders and with Z-kinematics for the tele wheeled loader.

**Flexible in application** with a 3rd Control circuit, unpressurised reverse travel with a leakage oil line, front plug receptacle and attachment parts for the work platform\*

**High bucket apron,** long bucket bottom as well as a large tilt in and tilt back angle for a safe and quick material transport with high volumetric efficiency.

**3 types of steering** to meet every requirement.

**More reach and lift height** due to a telescoping loading system.

**Gentle retraction and extension** thanks to the final position dampening in the at each end of travel.

**Comfort cab** with extensive glazing for superb circumferential visibility and fatigue-free working.

**Excellent performance characteristics** with compact dimensions and a low net weight.

**Powerful engines** with high output and low noise level.

**Variable drive system** optionally up to 30 km/h for sensitive working and high tractive forces.

**Excellent traction** thanks to 100% connectable differential lock.

**Wide and safe entry** thanks to the undivided chassis and all-wheel steering.

**Large selection of tyre options** for a wide range of application areas.

\* The regulations and laws of the relevant countries and regions are to be met.



KL 31.5  
 37.5  
 47.5

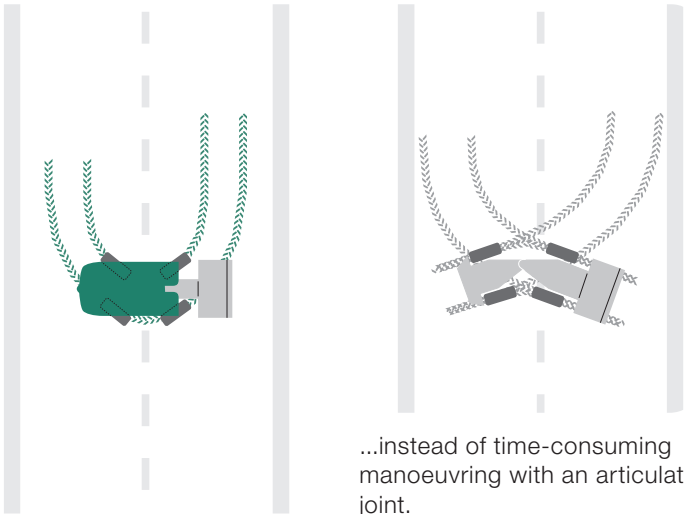
Outstanding manoeuvrability.  
 Extreme stability.  
 Constant payload.

Safe and efficient working guaranteed to you in every situation by the wheel and tele wheeled loaders from Kramer.

However, safety for Kramer covers many other aspects. The proven quality ensures a high investment security — you can always rely on a Kramer.



Turning made easy with all-wheel steering...

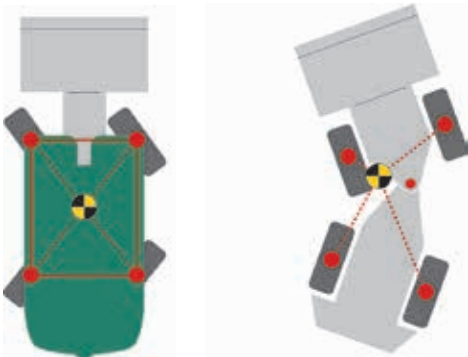


### Outstanding manoeuvrability

The all-wheel steering and the steering lock of 40 degrees on each axle allow you a high degree of manoeuvrability. This makes many manoeuvres superfluous and shortens traversing and cycle times.



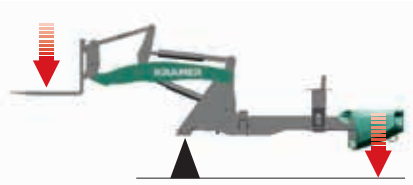
Undivided chassis for a high level of stability...



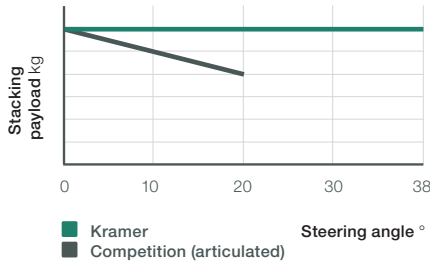
### Extreme stability

Our wheel loaders are designed with an undivided chassis that prevents shifts in the centre of gravity with a full steering lock. The vehicles are therefore convincing with a high level of stability, even when working on uneven ground.

Constant leverage for constant payload



Constant payload



### Constant payload

The undivided chassis prevents the clearance between the counterweight and loading system from changing. The result: Constant leverage that makes working safe in all load situations. In the process, the payload always stays the same, regardless of the steering angle.

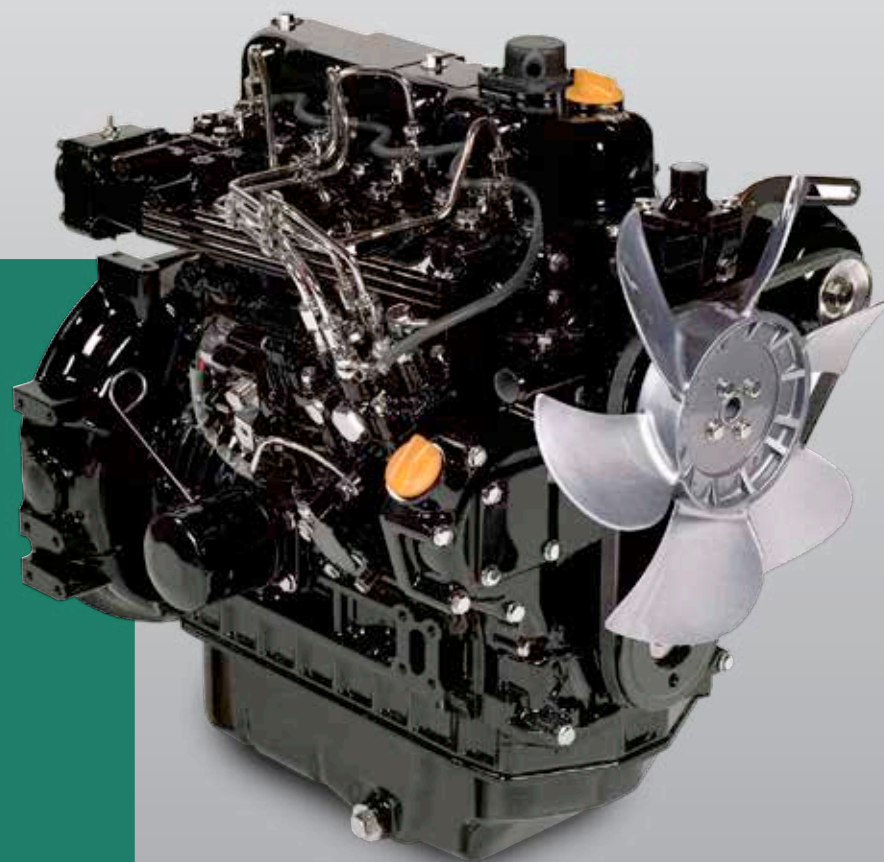
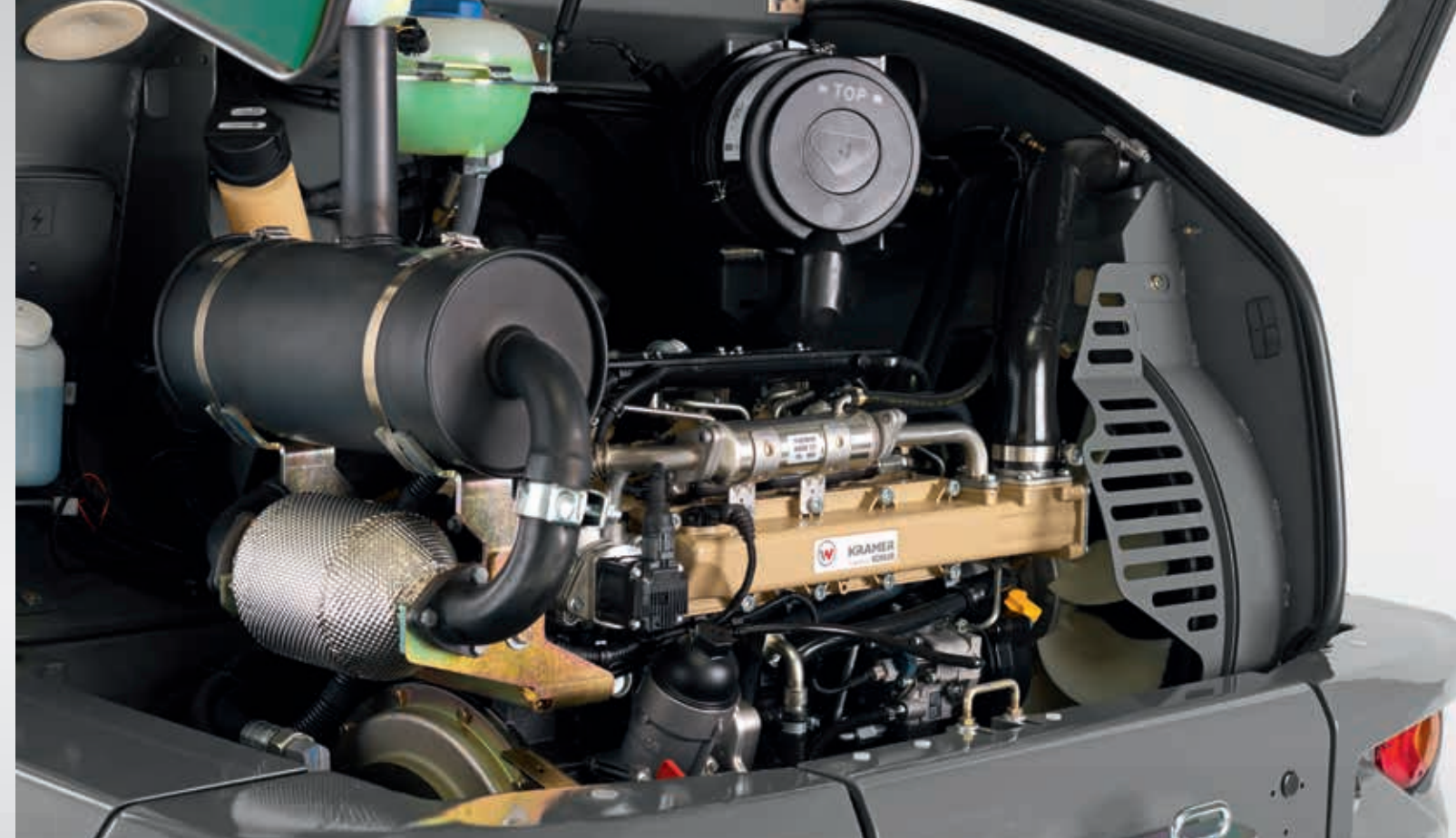
- 1 Stability in any application:**  
The undivided chassis creates a high level of stability.
- 2 Even with a high load:**  
Constant payload at any steering angle.
- 3 The high level of manoeuvrability** in particular convinces with limited space.



## More performance, less exhaust emissions.

The engine concept of the 5-series convinces through high performance efficiency and the latest exhaust emission technology. The 55 kW Kohler engines in the models KL37.5 and KL30.5T meet the requirements of exhaust emission level IIIB and are outfitted with a diesel oxidation catalytic converter (DOC) as a standard. With 300 Nm torque, it provides the highest performance. At the same time, however, the service and maintenance costs are kept low due to the completely maintenance-free DOC system.

The KL31.5 wheel loader is outfitted with a 35 kW engine from Yanmar and they fall into the exhaust emission level IIIA. The power-adjusted engine version of the machines provides lower operating and purchase costs. This is made possible by the lightweight design of both Kramer models, which is difficult to implement without the typical all-wheel steering. Time-tested and proven technology is used that does not require any type of exhaust after-treatment.

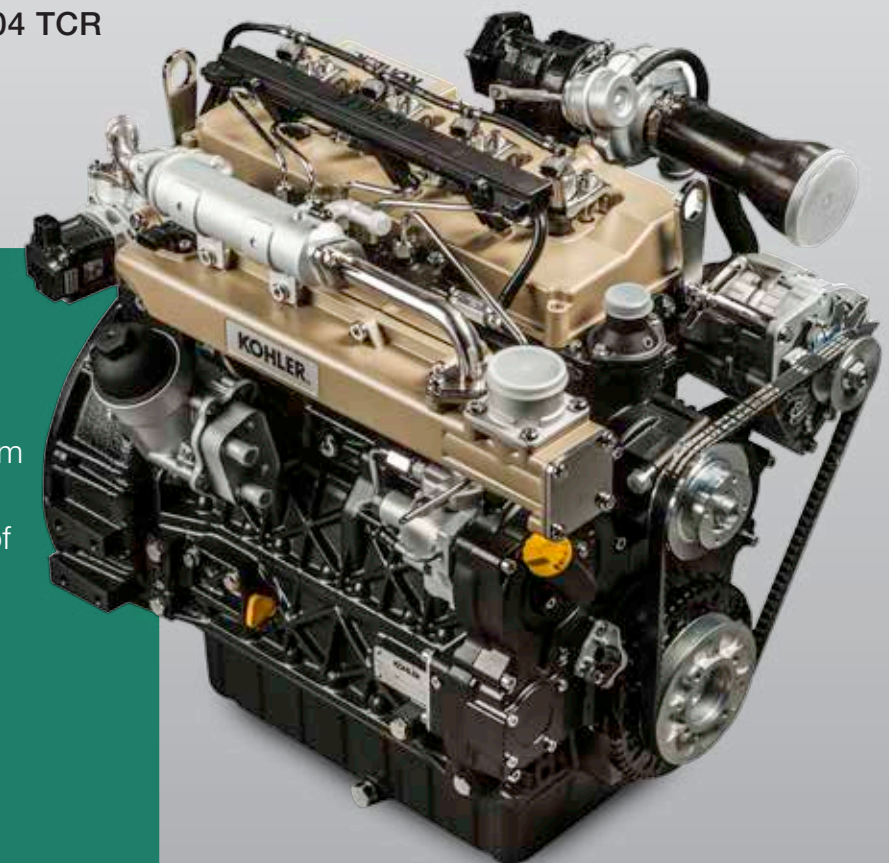


Yanmar 4TNV88

### Level IIIA with KL31.5:

- Electronically controlled drive system
- High-pressure drive system instead of medium-pressure drive system of the previous model
- Low purchase costs due to the power-adjusted engine version
- Simple time-tested and proven installed technology
- No exhaust after-treatment or exhaust gas recirculation necessary
- Excellent power to weight ratio due to the Kramer design

### Kohler KDI 2504 TCR



### Level IIIB with KL37.5 and KL30.5T:

- Electronically controlled drive system
- High-pressure drive system instead of medium-pressure drive system of the previous model
- No regeneration times
- No additional maintenance costs due to exhaust after-treatment
- Reduced fuel consumption
- Reduced operating costs
- Manufacturer's warranty 4 years/4000 h



Stable in ground conditions.  
Accurate at the site of application.

A powerful drive system plus sophisticated safety and comfort features; with this combination, the Kramer wheel and tele wheeled loaders score both on the go as well as on the farm.

Our wheel loader KL37.5 and tele wheeled loader KL30.5T are also optionally available with a 30 km/h transmission. This allows you to save time on the road, which you can thus use at the site of application.

### 100% connectable differential lock

Rain-sodden soil, wetness or snow: Wheel and tele wheeled loaders from Kramer also stand their ground on challenging subsurfaces thanks to the 100% connectable differential lock, which provides an even distribution of the drive force to all four wheels.



### Top performance of the drive system:

- Maximum driving and tractive force in all working situations
- Sensitive, modern electronically controlled drive system
- Constant Speed Drive (CSD) with memory function
- 100% connectable differential lock for constant maximum traction

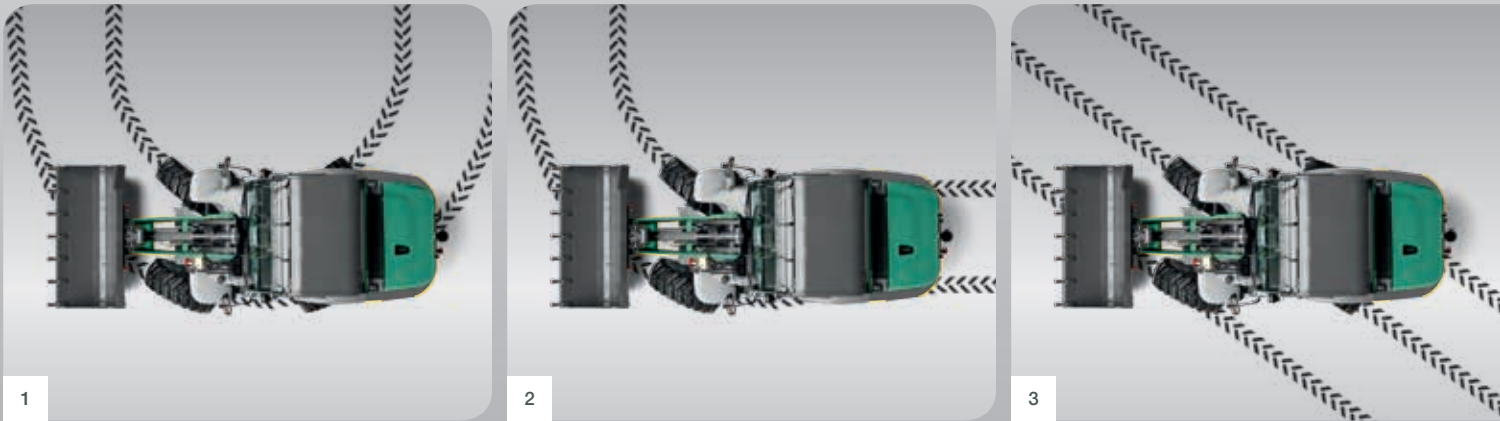


30 km/h high speed transmission — fast driving on the road to the site of application.



Constant travel speed, e.g. 4 km/h

When using attachments that, for example, are operated at a constant high RPM, but at the same time with a very low travel speed (e.g. a sweeper), these specifications can be realised simultaneously by the creep speed controller in conjunction with the hand throttle. There is no speed and rev. control via the foot pedals, which relieves the burden on the operator.



- 1 All-wheel steering: particularly manoeuvrable due to 2 x 40 degree steering angle.
- 2 Front drum steering: usual driving behaviour, even at high speeds on the road.
- 3 Crab steering: ideal for manoeuvring in confined spaces when clearing industrial buildings.



KL315  
KL37.5  
KL30.5T

**High load-carrying capacity.**  
**Easy to replace.**

#### Reliable in stacking operation

With the P-kinematics, you have optimal control of all transported goods thanks to the parallel guide in the entire lifting range.

#### Convincing in bucket operation

Safe material transport, even with a full bucket: This is made possible by the sophisticated combination of the Kramer bucket shape with a high bucket apron and long bottom as well as a 50-degree tilt back angle and 45 degree empty angle.

**NEW**

Fully automatic load stabiliser



**Protects man and machine:** The fully automatic load stabiliser dampens oscillations of the loading system or the load during transport work. For higher travel speeds and even more driving stability and comfort.

**Transport securely:** thanks to the bucket geometry and high tilt back angle.



**Maximise reach:** The tele loading system increases the application areas of your machine.

#### Top performance of the loading system:

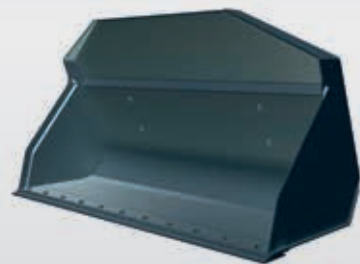
- Fully automatic load stabiliser for more driving comfort and safety
- P-kinematics for precise parallel guidance of the load across the entire lift height
- A thousand-time-tested and proven quick-hitch system for the quick application of different attachments
- Ideal bucket geometry for optimal handling of bulk material

\* KL30.5T has Z-kinematics with parallel guidance



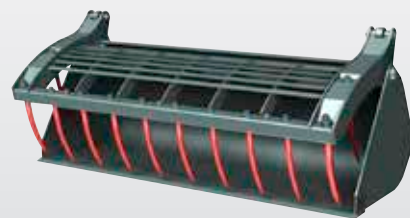
## Sensitive control. Tackle jobs powerfully.

Connect and disconnect attachments within seconds, sensitive control, quick work cycles and all of this with a low noise level in the cab: The technology of the work hydraulics of our machines makes this possible.



1

**Light materials bucket and super light goods bucket:**  
For specific bulk density from 1.3 to 09 t/m<sup>3</sup>.



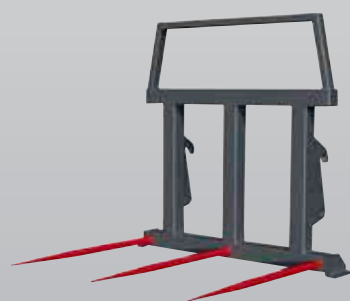
2

**Silage handling bucket**  
The combination of a bucket and grippers is the ideal attachment for removing and transporting chopped silage.  
  
Without having to replace the attachment, other feed ration components can be removed with the bucket, such as soybean meal or similar.  
  
Thanks to the large opening angle, maximum flexibility is a given.



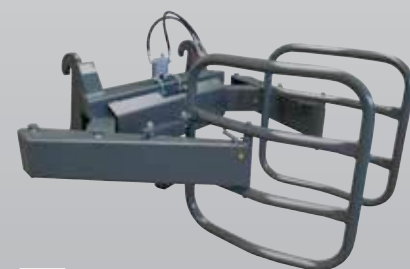
3

**Stacker:**  
Available with tine lengths from 1.0 to 1.2 metres, also with a hydraulically activated side thrust.



4

**Bale spear:**  
The easiest way to transport round or square bales.



5

**Round bale gripper:**  
The round bale gripper makes it possible to safely and gently transport round silage bales.

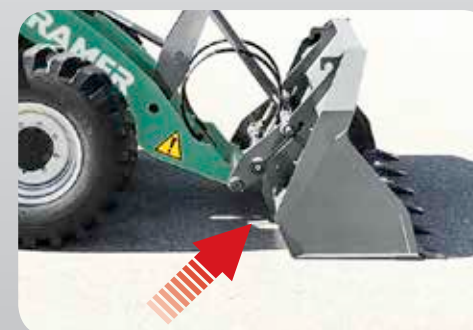


6

**Work platform:**  
For everyone who has to go up: The work platform is the ideal extension of your Kramer wheel loaders and tele wheeled loaders.  
Thanks to the work platform, you can complete work at great heights in complete safety.

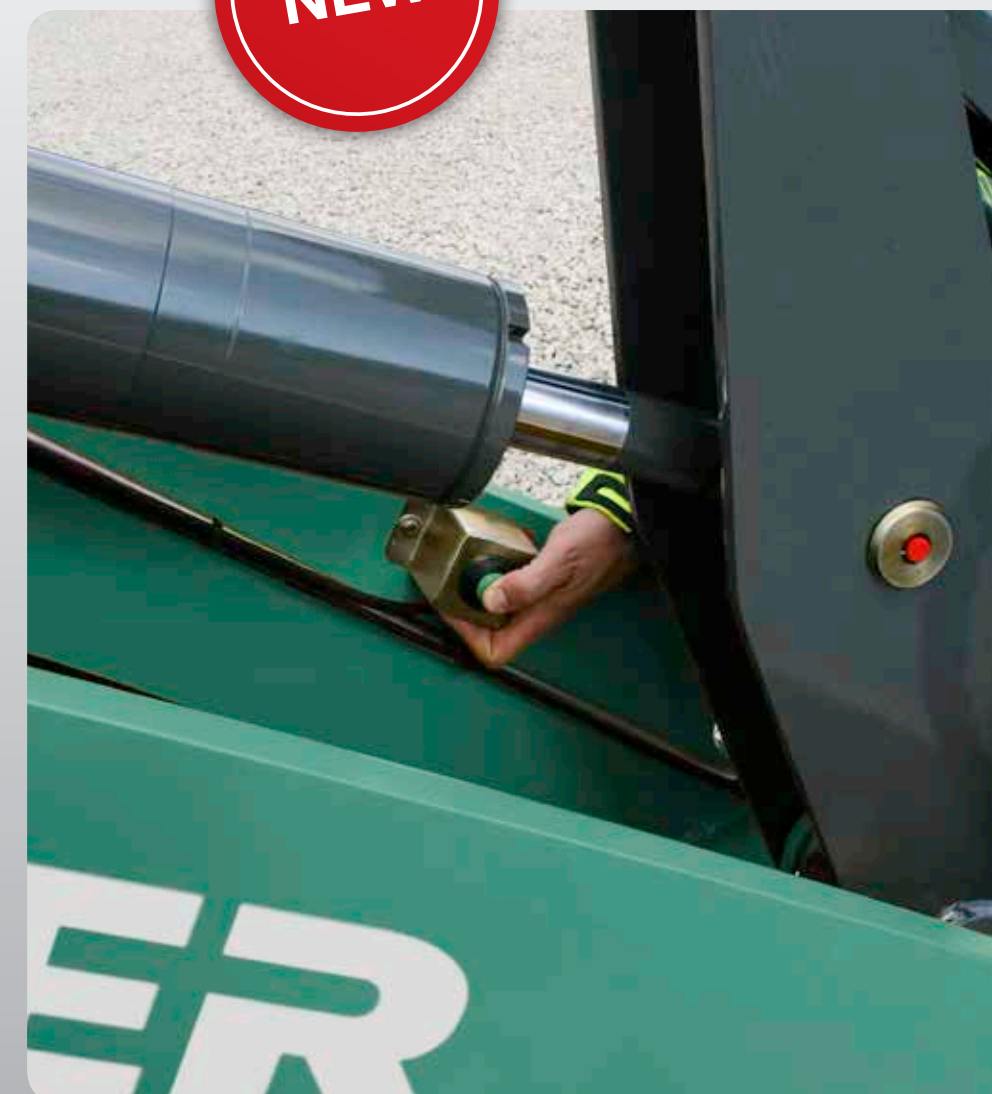
### Top performance of the quick-hitch system:

- Lock outside of the dirty area to ensure a long service life of the hydraulic components and low wear
- More safety due to two-hand operation (no undesired release)
- Quick tool exchange



**The Kramer quick-hitch system:** Drive up to the attachment. Hydraulically mount the attachment from the seat and with a clear line of sight. Control the process with the touch slide on the joystick.

NEW



**Pressure release in the 3rd control circuit** for easy connecting and disconnecting of attachments with hydraulically activated **auxiliary functions**.

Other auxiliary devices by inquiry.



# KL315 KL37.5 KL30.5T

## Everything under control inside. Everything in view outside.

The newly designed cab by Kramer is unique in this size class of machines. It is characterised by maximum comfort, optimal ergonomics and functionality in every detail.

With the powerful heater and optional air-conditioning system\*, they ensure comfortable working conditions at all times.

The joystick was also adopted from the time-tested and proven 80-series and thus ensures a safe and intuitive operation. The colour-coded keypads in the cab also provide a high degree of clarity.

\* With the KL37.5 and KL30.5T

### Colour-coding on the keypad: four colours for even more safety.

- |            |                   |
|------------|-------------------|
| Safety     | Driving           |
| Hydraulics | Electrical system |



Very spacious and perfect visibility to all sides.

### Top performance in the cab:

- Intuitive operation of all-in-one joystick
- 3rd control circuit with proportional technology
- Keypad colour-coded by functions for an intuitive operation
- Powerful heater, window ventilation and heating nozzles in the footwell
- Fully integrated optional air-conditioning system\*
- Windscreen wipers with an interval switch for good visibility at all times
- Due to the suspended pedals, the cab floor can be easily cleaned, thus ensuring a high level of safety when driving



Safe entry:  
due to the wide step-like entry.



Everything in control at night: Switch lighting and well-thought-out arrangement of the operator's controls.



Sensitive and precise control of the machine and attachment via mechanically, pilot-operated joystick.



## Simple maintenance. Rapid service.

We know that every minute of application counts for you. That is why we already ensure during the design and development that you can quickly and easily maintain your wheel loader and tele wheeled loader.

The engine hood can be opened wide so that all maintenance points are conveniently accessible. And the best maintenance is the kind that is not required, such as with our maintenance-free exhaust fume cleaning system (DOC) with the 55 kW models.

### Kramer Telematic:

Optionally, you can do well in terms of maintenance with the Telematic.

#### Functions:

##### Simple data access in real time

The GSM/GPS unit installed on the machine collects operating data in real time, which can be displayed directly online on the Trackunit Manager.

##### User-friendly monitoring

The Trackunit Manager is user-friendly and intuitive. It offers a range of simple tools that you can use to easily and efficiently track, monitor and manage your machines and fleet.

##### Adaptable and expandable

You can individually design your Trackunit Manager so that it precisely corresponds to your data and information needs. It can be expanded with additional functions if you modify your needs or your business grows.

##### Download reports

You can schedule and download a large selection of management reports. In this way, you simplify procedures and make sound strategic decisions.

##### Maximum transparency

The Trackunit Managers offer you complete transparency of your entire fleet. You can see the current location of each vehicle as well as the movement on a digital map.

##### Preventative alarm features

The integrated alarm module helps you to protect your high quality investment in the machinery and fleet against theft and unauthorised use.

##### Optimised maintenance

The Trackunit Manager helps you to optimise maintenance procedures. This leads to less downtime.

### Top performance with maintenance and service:

- Quick maintenance due to good accessibility
- Reliable diagnostics via Kramer diagnostic software KADIAS
- 30,000 spare parts in stock for quick repairs world-wide.



**Quick and easy service:** reduces the downtime of your machine to a minimum.





Your wishes.  
Many possibilities.

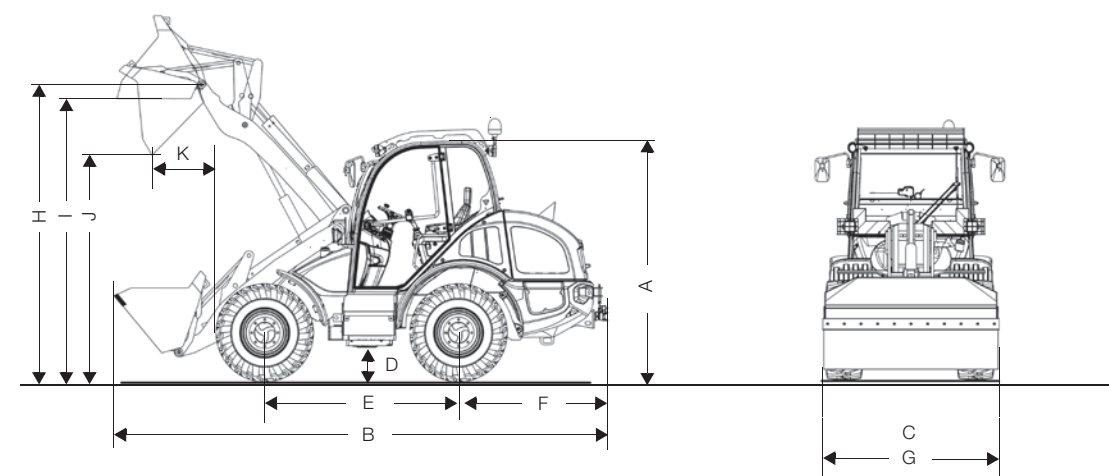


Noise level	KL31.5	Motor (YANMAR, 4TNV 88)	dB(A)
SOUND POWER LEVEL			
Measured value	–	–	100
Guaranteed value	–	–	101
Noise level at the driver's ear in the cab	–	–	74
Noise level	KL37.5/KL30.5T	Motor (KOHLER, KDI 2504 TCR)	dB(A)
SOUND POWER LEVEL			
Measured value	–	–	100
Guaranteed value	–	–	101
Noise level at the driver's ear in the cab	–	–	78
VIBRATIONS			
Vibration total value of the upper body extremity	< 2.5 $\frac{m}{s^2}$	< 2.5 $\frac{m}{s^2}$	
Highest effective value of weighted acceleration for the body	< 0.5 $\frac{m}{s^2}$	< 0.5 $\frac{m}{s^2}$	

	KL31.5	KL37.5	KL30.5T
OPERATING AND PERFORMANCE DATA			
Bucket content with standard bucket in m³	0.75	0.95	0.85
Operating weight (standard equipment) kg	4,100	4,800	5,250
Quick-hitch system	hydraulic	hydraulic	hydraulic
MOTOR			
Make	Yanmar	Kohler	Kohler
Type/Model	4TNV88	KDI 2504 TCR	KDI 2504 TCR
Performance kW	35	55	55
Max. torque Nm at RPM	140 at 1400	300 at 1500	300 at 1500
Displacement cm³	2,190	2,482	2,482
Exhaust emission stage	IIIA	IIIB	IIIB
Emissions	Tested and certified according to 97/68EC*2012/46EC		
POWER TRANSMISSION			
Drive system	continuously variable hydrostatic axial-piston gearbox		
Travel speed km/h	20 (series)	20 (series) 30 (option)	20 (series) 30 (option)
Axles	Planetary steering axles		
Overall oscillating angle °	22	22	22
Differential lock	100% VA	100% VA	100% VA
Service brake	Hydraulic disc brake		
Parking brake	mechanical disc brake		
Standard tyres	12.5-18	12.5-20	12.5-20
STEERING AND WORK HYDRAULICS			
Functionality	Hydrostatic all-wheel steering with emergency steering properties Front drum steering (option), crab steering (option)		
Steering pump	Gear pump via priority valve		
Steering cylinder	Double-acting with independent synchronisation		
max. steering lock °	2 x 40		
Work pump	Gear pump		
Flow rate (pump) max. l/min	52	70	70
Pressure max. bar	210	240	240
KINEMATICS			
Design system	P-kinematics	P-kinematics	Z-kinematics
Lifting force/shearing force kM	28.9/28.6	34.8/41.4	31.0/50.0
Raise/lower lift cylinder s	5.0/3.0	5.5/4.0	5.5/3.7
Tipping cylinder fill shovel/empty shovel s	2.5/3.0	2.5/2.5	2.6/3.5
Tilt-in and tilt-out angle °	50/45	50/45	40/40
Tipping load (standard bucket) kg	3,150	3,700	3,000
Tipping load (stack) kg	2,370	2,875	2,500
Payload S=1.25 (stacker) kg	1,900	2,300	2,000
Payload S=1.67 (stacker) kg	1,400	1,700	1,500
Digging depth mm	50	60	80
FILLING VOLUME			
Fuel/hydraulic tank l	75/50	75/50	75/50
ELECTRIC SYSTEM			
Operating voltage V	12	12	12
Battery/alternator Ah/A	77/80	100/80	100/80
Starter motor kW	2.3	2.0	2.0

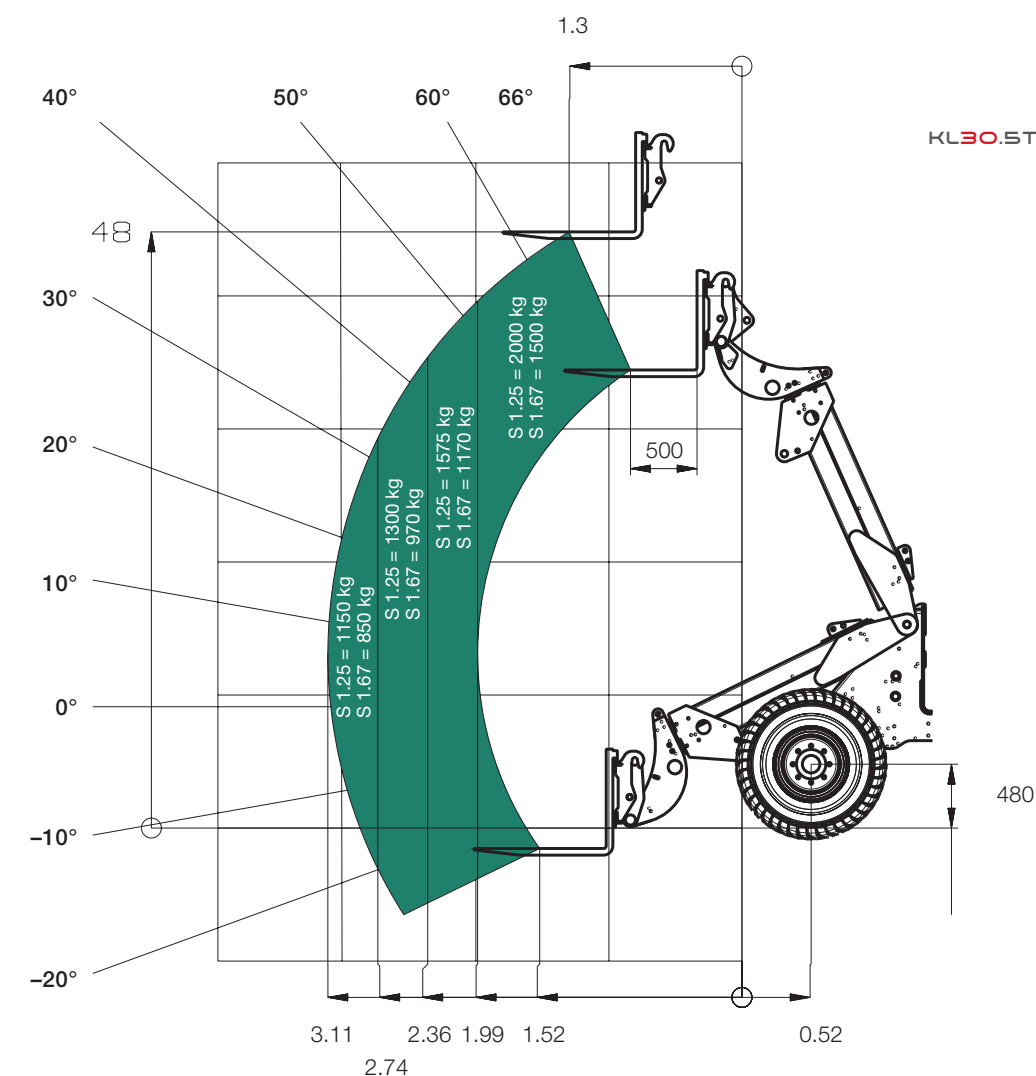


Dimensions.



DIMENSIONS				
A	Height mm	KL31.5	KL37.5	KL30.ST
B	Length mm			
C	Width mm			
D	Ground clearance mm			
E	Distance between wheels			
	Middle of front axle to tip tooth mm			
F	Middle of the rear axle to the end of the vehicle mm			
G	Bucket width mm			
H	Bucket pivotal point mm			
I	Overhead loading height mm			
J	Dumping height mm			
K	Dumping width mm			
	Stacking height mm			
	Turning radius (tyres) mm			
DIMENSIONS WITH THE LONG LOADING SYSTEM				
B	Length mm			
	Middle of front axle to tip tooth mm			
H	Bucket pivotal point mm			
I	Overhead loading height mm			
J	Dumping height mm			
K	Dumping width mm			

Load-bearing capacity diagram.



Maximum permissible trailer loads with EC tractor approval

	BALL COUPLING		DRAWBAR COUPLING WITH BOLT	
	Trailer load unbraked kg	Trailer load braked kg	Trailer load unbraked kg	Trailer load braked kg
KL31.5	750	3,500	-	-
KL37.5	750	3,500	750	8,000
KL30.ST	750	3,500	750	8,000





**KRAMER**  
*on the safe side*

**Kramer-Werke GmbH**  
Wacker Neuson Strasse 1  
88630 Pfullendorf  
Germany  
Tel. 00 800 90 20 90 20\*  
Fax +49(0)7552 9288-234  
info@kramer.de  
www.kramer.de

\* free

